



## Groundbreaking Engineering

*Wind-tunnel designed.* Chrysler tested several body profiles in a special wind tunnel built with the help of the Wright brothers.

*Steel, bridge-like internal body structure* including roof framing.

*Hydraulic brakes* as in all Chrysler cars

*Automatic overdrive transmission.* Lowers engine speed by 30% for quieter ride and improved economy.

*Modern, almost radical styling.*

*Six (DeSoto) and eight-cylinder (Chrysler) engines*

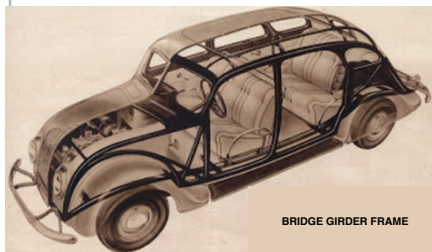
*Standard oil filter* for long engine life

*Floating Power™ engine:* cushioned motor mounts place engine over the front axle, not behind it.

*Dynamic Balance™ design:* seats are cradled between the front and rear axles.

*Wider body.* Front and rear seats are both wide enough for three.

*Perfect ventilation system.* Vents in quarter windows keep fresh air moving through the entire cabin.



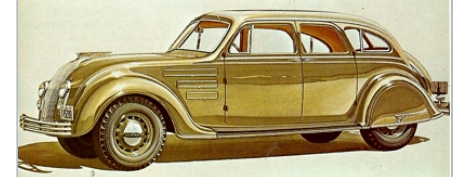
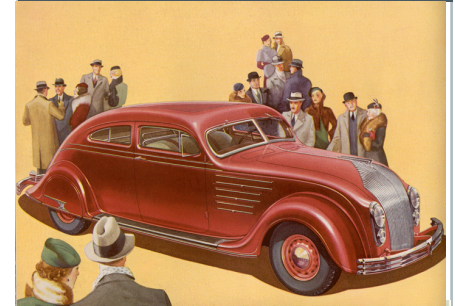
BUILT LIKE A BRIDGE

## Learn more

- Visit the Airflow Club of America website at [airflowclub.com](http://airflowclub.com)
- Download brochures and technical documents (or read on-line) from the club site.
- View period infomercials and ads on YouTube. See the Library and Links tab at [airflowclub.com](http://airflowclub.com).
- Become a member. Join the Airflow Club of America. Airflow ownership is not a requirement for membership!



# What is that?



## The Chrysler and DeSoto Airflows



In 1934, Chrysler Corporation introduced the first streamlined, all-steel-bodied production cars in its DeSoto and Chrysler divisions. Production continued through 1936 (DeSoto) and 1937 (Chrysler) to a total of about 55,000 units. The low sales figure makes these innovative cars rare today.



# Airflow Club of America

## New Member and Renewal Application

Airflow ownership is not a requirement for membership

### 2024 Annual Dues and Contribution Due Jan 1

- ACA dues
  - Printed newsletter US
  - Printed newsletter elsewhere
  - After February 1st please add
  - Voluntary contribution to ACA
- Total payment in US \$: \_\_\_\_\_

*Make check or payment in US funds only payable to*

Airflow Club of America.

*Mail to:* Linda Wilson

P. O. Box 935

Sanger, CA 93657

Dues include email subscription to the .pdf *Airflow Newsletter*. If a domestic or foreign, mailed, printed subscription is desired, include the appropriate payment. **Mail submission.** Print this blank application and complete it. Mail it with payment in US funds to the address above. NOTE: The Airflow Club no longer has a PayPal account. **New memberships and renewals both require submission of a membership application.**

### MEMBERSHIP INFORMATION (Renewals just name and any changes.)

Name (REQUIRED)	Spouse/partner name		
Address	Phone number		
City	Mobile phone number		
State	Postal code	E-mail address	

**VEHICLE INFORMATION** (Use back for additional cars. For renewals, please just submit any changes to your vehicle information as published in the most recent ACA Members roster booklet.)

Car number	1	2	3
Year, make, model (eg, 34 DeSoto SE)			
Body type (eg, 4-door, coupe)			
Serial number (front door post)			
Engine number (top water pump)			
Present condition*			

\* Please use standard terminology: parts car, unrestored, driver, restored, modified

- I recently acquired car # \_\_\_\_\_ from \_\_\_\_\_
- I do not own an Airflow at present
- New member. I was referred to the Airflow Club by \_\_\_\_\_
- Renewal. If you have transferred any of the cars listed in the last roster, please provide the name and address of the new owner. \_\_\_\_\_

**New memberships received after November 1st will commence on the next January 1st**