

YOU CAN RIDE

*in the Lap of Luxury*

FOR ONLY \$745\*

ILLUSTRATED, AIRSTREAM SIX SEDAN, \$830



*Chrysler*



WHEN you think of Chrysler, you just naturally think of luxury... distinction... brilliant performance... but perhaps you haven't realized that the beautiful Airstream Chryslers are priced as low as \$745.

What an answer that is for a family that wants to keep thrifty, but yearns for a car that's more than just a way to get places!

The Airstream Chryslers are big cars... 118- and 121-inch wheelbase. They give you a feeling of steady security on the road.

They are luxurious... exceptionally roomy. They ride with matchless ease, because nobody has gone as

far as Chrysler with scientific weight distribution.

They have strong steel safety bodies... with mutually reinforcing body and frame construction. They have the often-copied but never-equalled genuine Chrysler hydraulic brakes.

Speed... Pick-up... Pulling-power... always silky-smooth with Chrysler's Floating Power engine mountings. Long ago Chrysler proved it could

produce the liveliest, smoothest performance on the roads.

The fact is, the Airstream Chryslers are luxury cars in every single important detail. And the price is just pure good news. Visit a Chrysler dealer and judge for yourself.

☆ CHRYSLER AIRSTREAM SIX... 91 h. p., 118-in. wheelbase. Six body types. Prices from \$745 to \$870. Four-Door Sedan \$810. New Convertible Coupe \$870.

☆ CHRYSLER AIRSTREAM EIGHT... 105 h. p., 121-in. wheelbase. Five body types. Prices from \$915 to \$995. Four-Door Sedan \$975.

#### NEW LOW AIRFLOW PRICES

☆ CHRYSLER AIRFLOW EIGHT... 115 h. p., 121-in. wheelbase. Three body types. All models \$1245.

☆ CHRYSLER AIRFLOW IMPERIAL... 110 h. p., 128-in. wheelbase. Two body types. All models \$1475.

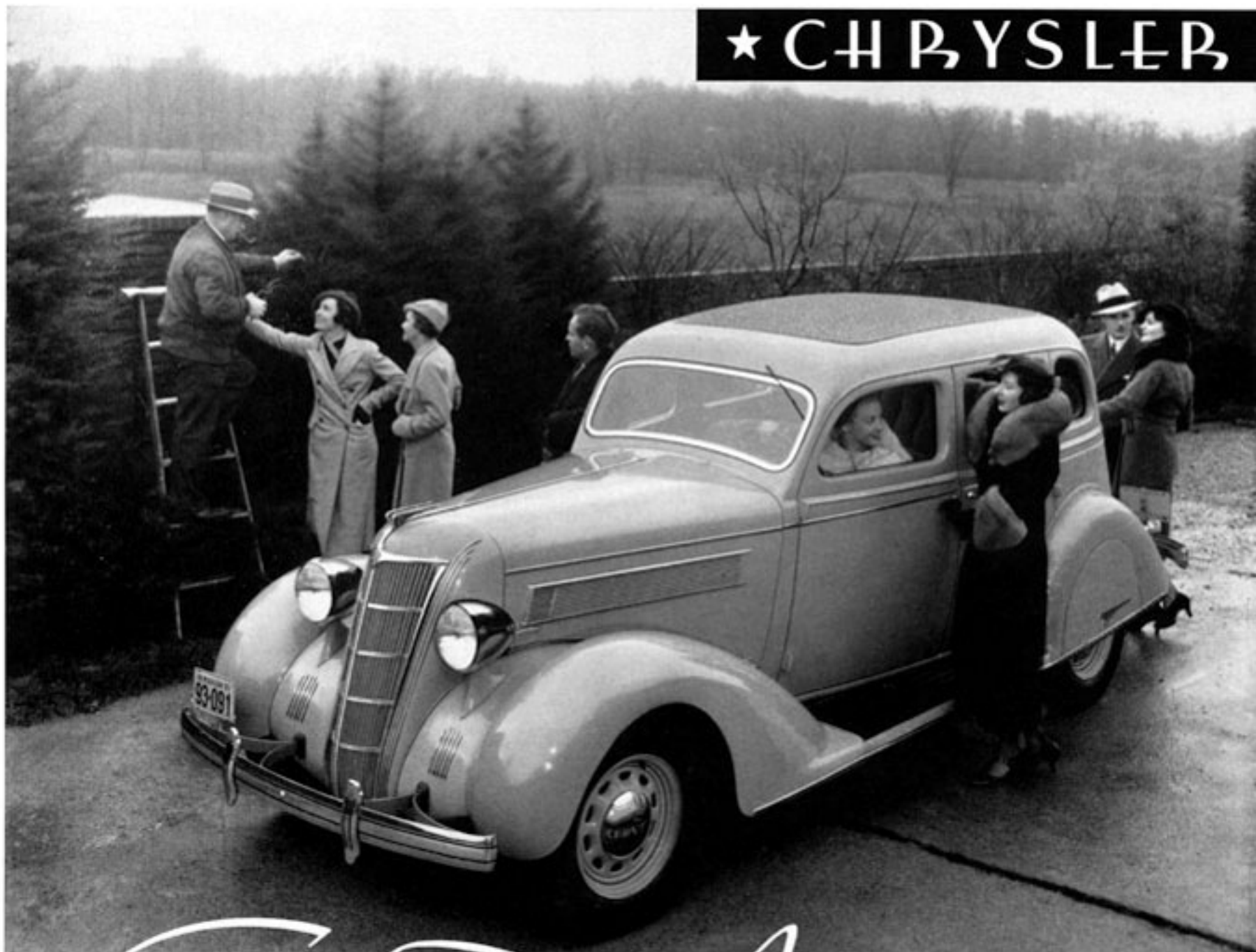
☆ AIRFLOW CUSTOM IMPERIAL... 110 h. p., with 117-in. wheelbase Sedan \$2245... Sedan Limousine \$2145; and 150 h. p., with 146-in. wheelbase Sedan \$5000... Sedan Limousine \$5145.

\*All prices list at factory, Detroit. Time payments to fit your budget. Ask for the official Chrysler Motors Commercial Credit plan.



BEAUTIFUL NEW AIRFLOW CHRYSLERS \$1245 AND UP

★ CHRYSLER



# Enter... The Airstream

★ ★ SMART COMPANION CAR TO THE CHRYSLER AIRFLOW ★

THE NEW Airstream Chryslers bring something entirely new to motoring. Less expensive than the regal Airflows, they embody many of the Airflow advantages, which have given the world a whole new conception of motoring pleasure and comfort.

They're exceptionally roomy cars . . . with inches more seat width, leg-room and head-room. They have big wide doors, skillfully designed in relation to seats so that you may enter or exit gracefully.

Engine and seats are all moved forward to give a better weight distribution and a smooth fatigue-free ride. The steel bodies and frames are mutually reinforcing . . . providing an extremely strong and rigid structure which prevents road shocks from reaching the interior of the car. A synco-silent transmission makes shifting effortless and quiet. Powerful engines with

Floating Power mountings give that silky, dynamic performance so characteristic of Chrysler. There's an Airstream Six and an Airstream

Eight . . . just about the lowest priced luxury cars in the world . . . eminently fitted to take their place with the beautiful 1935 Airflow Chryslers to provide really modern travel at a wider range of price than ever before.



★ CHRYSLER AIRSTREAM SIX . . . 93 h. p. 118-in. w. b. Five body types. From \$745 to \$860. 4-Door Sedan \$830. ★ CHRYSLER AIRSTREAM EIGHT . . . 105 h. p., 121-in. w. b. Four body types. From \$935 to \$995. 4-Door Sedan \$975. ★ CHRYSLER AIRFLOW IMPERIAL . . . 115 h. p., 123-in. w. b. Three body types, all models \$1395. ★ CHRYSLER AIRFLOW CUSTOM . . . 130 h. p., 128-in. w. b. Two body types, \$1675. ★ CHRYSLER AIRFLOW IMPERIAL . . . Magnificent sedans and sedan-limousines. 130 h. p., with 137-in. w. b., and 150 h. p. with 146-in. w. b. Prices on request. ★ Duplate safety plate glass in all windows of all models at not more than \$10 additional. All prices f. o. b. factory, Detroit. Time payments to fit your budget. Ask for the official Chrysler Motors Commercial Credit plan.





## AIRFLOW *or* AIRSTREAM



... you get the good things first in a

*Chrysler*

THIS YEAR, whatever price you intend to pay for a motor car, be sure to see the great new Chryslers.

For the new Chrysler Airstream takes its place with the dramatic new Airflow to bring really modern motor car travel to new additional thousands.

The new Airstream Six and Eight cost little more than the out-and-out economy cars. Yet they embody many of the advantages of Airflow design which so revolutionized motoring last year.

They are the roomiest cars of moderate price you

ever saw . . . and the easiest riding, with their more scientific weight distribution and new tapered leaf springs.

They have the safety of a mutually reinforcing steel body and frame . . . new synco-silent transmission . . . Floating Power . . . streamlining that really means something.

The new Airflows are a pure delight to the eye. And with their brilliant new exterior beauty, they bring new interior luxuries and an even more astonishing Floating Ride.

The new Airflows give remarkably easy-shift-

ing with new synco-silent transmissions. And they have new perfected steering . . . so sure and effortless that these big cars handle like a small roadster.

Airflow or Airstream . . . you get the good things first in a Chrysler. Drive the cars and see for yourself.

☆ CHRYSLER AIRSTREAM SIX . . . 91 h. p., 118-in. w. h. Five body types. Prices from \$745 to \$860. Four-Door Sedan \$810.

☆ CHRYSLER AIRSTREAM EIGHT . . . 101 h. p., 121-in. w. h. Four body types. Prices from \$935 to \$995. Four-Door Sedan \$975.

☆ CHRYSLER AIRFLOW EIGHT . . . 115 h. p., 123-in. w. h. Three body types. All models \$1195.

☆ CHRYSLER AIRFLOW IMPERIAL . . . 110 h. p., 128-in. w. h. Two body types. All models \$1575.

☆ AIRFLOW CUSTOM IMPERIAL . . . Magnificent sedan and sedan limousines, 130 h. p., with 137-in. w. h. and 150 h. p. with 145-in. w. h. Prices upon request.

☆ Duplicate safety plate glass in all windows of all models at not more than \$10 additional. All prices f. o. b. factory, Detroit. Time payments to fit your budget. Ask for the official Chrysler Motors Commercial Credit plan.





...YOU'LL BE HAPPIER

WITH A

Chrysler



☆ The Chrysler Airflow and Chrysler Airstream bear a strong family resemblance. Inspired by one hundred million miles of Airflow satisfaction, both of the great new Chryslers for 1935 embody streamline in its most beautiful, most scientific form. Both are handsomely fashioned by function.



☆ Steering, braking, gear-shifting require but a gesture in these new Airflow and Airstream Chryslers. The astonishingly high cruising speeds are tireless and effortless.



☆ Chrysler, pioneer in low center of gravity, now carries this safeguard even further. Note there is practically no step from tonneau to running board on the new Chrysler Airstream.



☆ In gracious roominess, both Airflow and Airstream Chryslers stand supreme. Front and rear seats are deep and wide as divans. There's ample room for complete relaxation.



☆ Chrysler pioneered the Floating Ride and scientifically correct weight distribution. You will find it in its finest expression in the great new Airflow and Airstream Chryslers of 1935.

It's true year after year! The good new things . . . the worthwhile things that influence the entire industry . . . are available first in Chrysler cars.

There's a rare and special thrill in enjoying the new things first. And it's perfectly obvious that the most modern cars stay modern longest . . . depreciate more slowly . . . keep their value while the other cars are catching up in design. Try a Floating Ride in a 1935 Chrysler

... Airflow or Airstream. Prove for yourself that no other cars ride so smoothly . . . deliver such effortless speed and power . . . handle so nimbly . . . feel so safe and substantial on any kind of road.

It costs very little today to say "I drive a Chrysler." And never before have those words meant so much in motoring happiness, lasting satisfaction and true value for your dollars.

☆ CHRYSLER AIRSTREAM SIX . . . A handsome new Six revealing Airflow influence. 93 h. p., 118-in. w. b. Five body types. From \$745 to \$860. 4-Door Sedan \$830.

☆ CHRYSLER AIRSTREAM EIGHT . . . A big, brilliantly-performing new Eight with 105 h. p. and 121-in. w. b. Four distinguished body types. From \$935 to \$995. 4-Door Sedan \$975.

☆ CHRYSLER AIRFLOW EIGHT . . . The exclusive advantages of Airflow design, 115 h. p. and 121-in. w. b. Six passenger sedan, coupe and business coupe, all models \$1245.

☆ CHRYSLER AIRFLOW IMPERIAL . . . The flashing performance of 130 h. p.; the roomy luxury made possible by 128-in. w. b. Six-passenger sedan and six-passenger coupe, \$1475.

☆ AIRFLOW CUSTOM IMPERIAL . . . Embodying the finest in Airflow craftsmanship, 130 h. p. with 137-in. w. b. Sedan \$2245; Sedan \$2345 . . . 150 h. p. with 146-in. w. b. Sedan \$5000; Sedan Limousine \$5145.

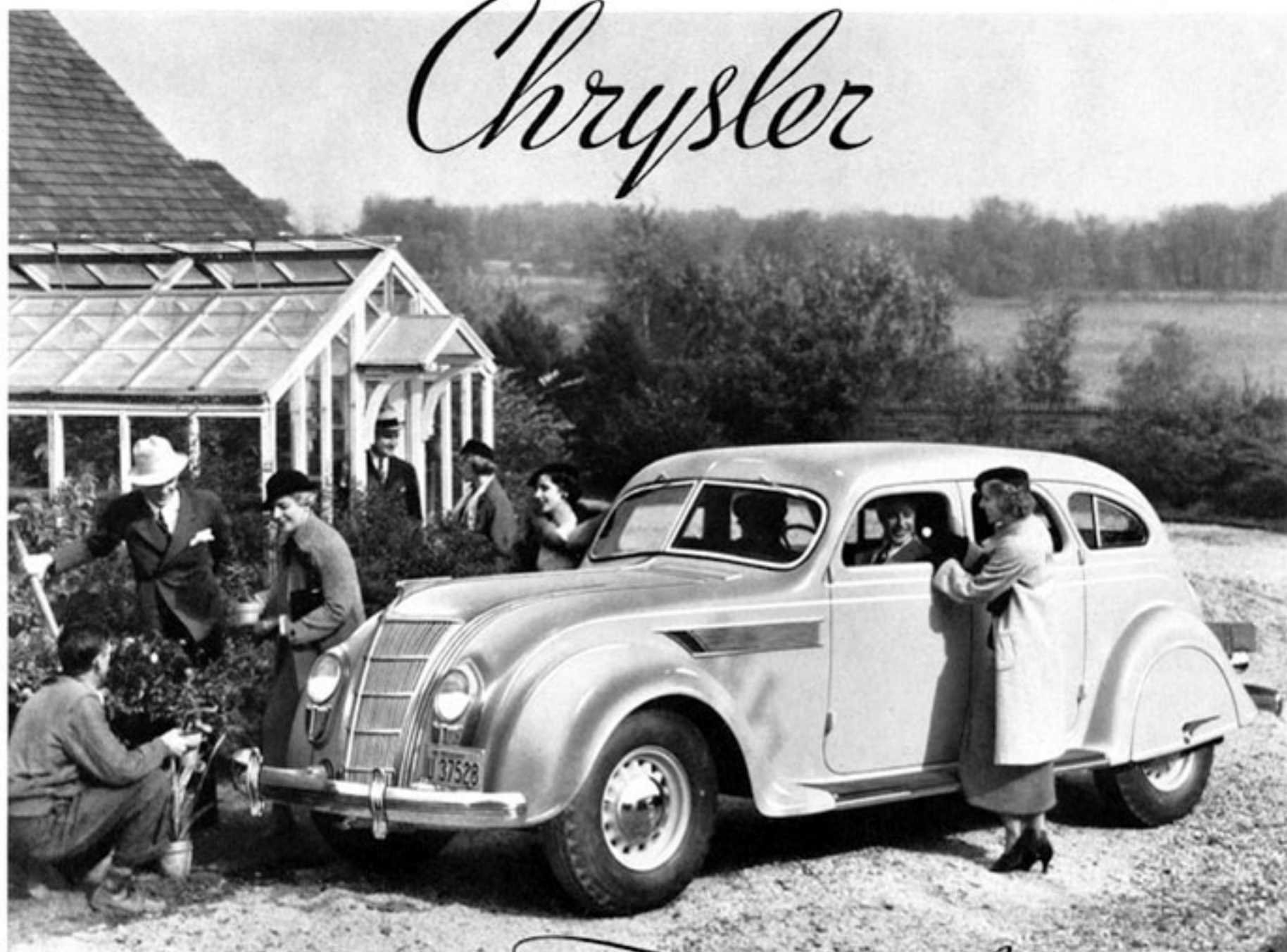
☆ Duplicate safety plate glass in all windows of all models at not more than \$10 additional. All prices f. o. b. factory, Detroit. Time payments to fit your budget. Ask for the official Chrysler Motors Commercial Credit plan.



AIRFLOW

AIRSTREAM

Chrysler



CHRYSLER MAKES MOTORING

Fun Again!

REMEMBER how you felt when you drove your first motor car? The marvel of it . . . the excitement . . . the way you wanted to go places just for the drive?

You can recapture that thrill. Just get behind the wheel of an Airflow Chrysler!

Feel the glorious sensation of slipping through the air without a trace of wind drag. See what it's like to drive a car that floats you over a rut-strewn detour as smoothly as many cars ride on city pavements.

Learn that a great big car with drawing room comfort can steer as nimbly as a small roadster.

See what we mean when we talk about automatic overdrive . . . that marvelous transmission improvement that automatically

changes gear ratios at 45 miles an hour . . . reduces engine speed one third . . . lets you drive 60 miles an hour on less gas than 40.

While you are enjoying yourself, remember that you are riding in the safest motor car on the road . . . with *both* a strong steel body and a strong steel frame (welded into a single unit) surrounding you on all sides.

Ask any Chrysler dealer to give you this



AIRSTREAM CHRYSLER EIGHT TOURING SEDAN

thrilling experience. He'll gladly arrange a good long trip and show you the several 1935 Chrysler models, including the brilliant new Airstream Chryslers that share many Airflow advantages and cost as little as \$745 f. o. b. factory.

☆ CHRYSLER AIRSTREAM SIX . . . 93 horsepower, 118-inch wheelbase, six body types. Prices from \$745 to \$870. Four-Door Sedan \$810. New Convertible Coupe \$870.

☆ CHRYSLER AIRSTREAM EIGHT . . . 105 horsepower, 121-inch wheelbase. Five body types. Prices from \$935 to \$995. Four-Door Sedan \$975.

#### NEW LOW AIRFLOW PRICES

☆ CHRYSLER AIRFLOW EIGHT . . . 115 horsepower, 121-inch wheelbase. Three body types. All models \$1245.

☆ CHRYSLER AIRFLOW IMPERIAL . . . 130 horsepower, 128-inch wheelbase. Two body types. All models \$1475.

☆ AIRFLOW CUSTOM IMPERIAL . . . 130 horsepower with 137-inch wheelbase. Sedan \$2245 . . . Sedan Limousine \$2345; and 150 horsepower, with 146-inch wheelbase, Sedan \$5000 . . . Sedan Limousine \$5145.

\*All prices list at factory, Detroit. Time payments to fit your budget. Ask for the official Chrysler Motors Commercial Credit plan.



FIVE HUNDRED MILES  
IS FUN IN A

*Chrysler*

DRIVE as far as you like . . . as fast as you like . . . you'll arrive refreshed in a Chrysler.

Chrysler pioneered better weight distribution and the Floating Ride last year.

Now with a year's start on the industry, and a year's experience, Chrysler carries this modern principle to its finest, farthest development.

Airflow or Airstream . . . you'll find the world's most effortless travel in a 1935 Chrysler. These magnificent modern cars not only float over the road . . . they deliver astonishing speed tirelessly . . . banish all trace of vibration . . . take curves without swerving or swaying . . .

steer as nimbly as a small roadster. Gear shifting and braking require but a gesture. Mutually reinforcing bodies and frames absorb road shocks . . . and give you a reassuring feeling of safety.

Any Chrysler dealer will gladly give you

a demonstration. We urge you to take it before you buy any motor car.

☆ CHRYSLER AIRSTREAM SIX . . . A handsome new Six revealing Airflow influence. 98 h. p., 118-in. w. b. Five body types. From \$245 to \$850. 4-Door Sedan \$850.

☆ CHRYSLER AIRSTREAM EIGHT . . . A big, brilliantly performing new Eight with 105 h. p., and 121-in. w. b. Four distinguished body types. From \$915 to \$995. 4-Door Sedan \$975.

☆ CHRYSLER AIRFLOW EIGHT . . . The exclusive advantages of Airflow design. 115 h. p., and 121-in. w. b. Six-passenger sedan, coupe and business coupe. All models \$1125.

☆ CHRYSLER AIRFLOW INFANTAL . . . The flashing performance of 110 h. p., the roomy luxury made possible by 128-in. w. b. Six-passenger sedan and six-passenger coupe. \$1175.

☆ AIRFLOW CUSTOMER INFANTAL . . . Embodying the finest in Airflow craftsmanship. 110 h. p., with 117-in. w. b. Sedan \$2245; Sedan Limousine \$2445 . . . 150 h. p., with 140-in. w. b. Sedan \$5000; Sedan Limousine \$5145.

☆ Duplicate safety plate glass in all windows of all models at not more than \$10 additional. All prices f. o. b. factory, Detroit. Time payments to fit your budget. Ask for the official Chrysler Motors Commercial Credit plan.



SMART NEW AIRSTREAM TOURING SEDAN





## AIRFLOW *Chrysler*

★

WITH

AUTOMATIC OVERDRIVE

*You've* never known a motoring sensation quite like the automatic overdrive in the Airflow Chrysler Imperials.

At about 45 miles an hour, the miracle happens. The quiet hum of the motor fades to a whisper. The car seems to be sailing. Engine revolutions have been cut one third . . . but the car seems to be going faster.

What has actually happened? The overdrive . . . a part of the transmission . . . has changed gear ratios for you. You may be travelling at 60 . . . but the

engine is only turning at the usual rate for 40. The gas saving is such that you can drive 60 on less gas than at 40 in conventional drive. The saving on oil is even more spectacular!

There is nothing extra to do . . . nothing to think about. The overdrive shifts on and off automatically as you operate the accelerator.

This magical motoring improvement is just one of the factors that make the Airflow Chryslers the most thrillingly

modern of motor cars . . . one of the reasons why Airflow owners are the most enthusiastic motorists in the land.

Before you buy any new car, see a Chrysler dealer and arrange for a good long ride in an Airflow. You'll find it a most delightful experience.

★ CHRYSLER AIRSTREAM SIX, \$745 to \$870. DELUXE AIRSTREAM EIGHT, \$930 to \$1235. AIRFLOW CHRYSLER EIGHT, \$1245. AIRFLOW IMPERIAL, \$1475. CUSTOM AIRFLOWS, \$2245 to \$5145. \*All prices list at factory, Detroit. Special equipment extra.

★ ★ ★ ★

WHERE VIEWPOINTS ARE

*Sophisticated*

ILLUSTRATED, AIRFLOW EIGHT SEDAN, \$1045



THE new Airflow Chrysler fits naturally into place in a gracious design for living.

The hint of tomorrow in its beautiful newly-styled Airflow lines . . . the gracious roominess . . . divanlike seats . . . the superb way it floats its passengers over any kind of road . . . the almost fabulous ease with which it steers, accelerates, races or stops.

The thrill of a car that holds 72 stock car speed records . . . several at speeds better than 95 miles per hour.

The miracle of the automatic overdrive

that reduces engine revolutions one third at speeds above 45 . . . greatly prolonging the life of the car . . . greatly increasing gasoline economy.

A car so designed that you ride inside the frame . . . in a rigid unit of frame and

**Chrysler**  
AIRFLOW AIRSTREAM

all-steel body. The safest car on the road as well as the most thrilling . . . and most modern.

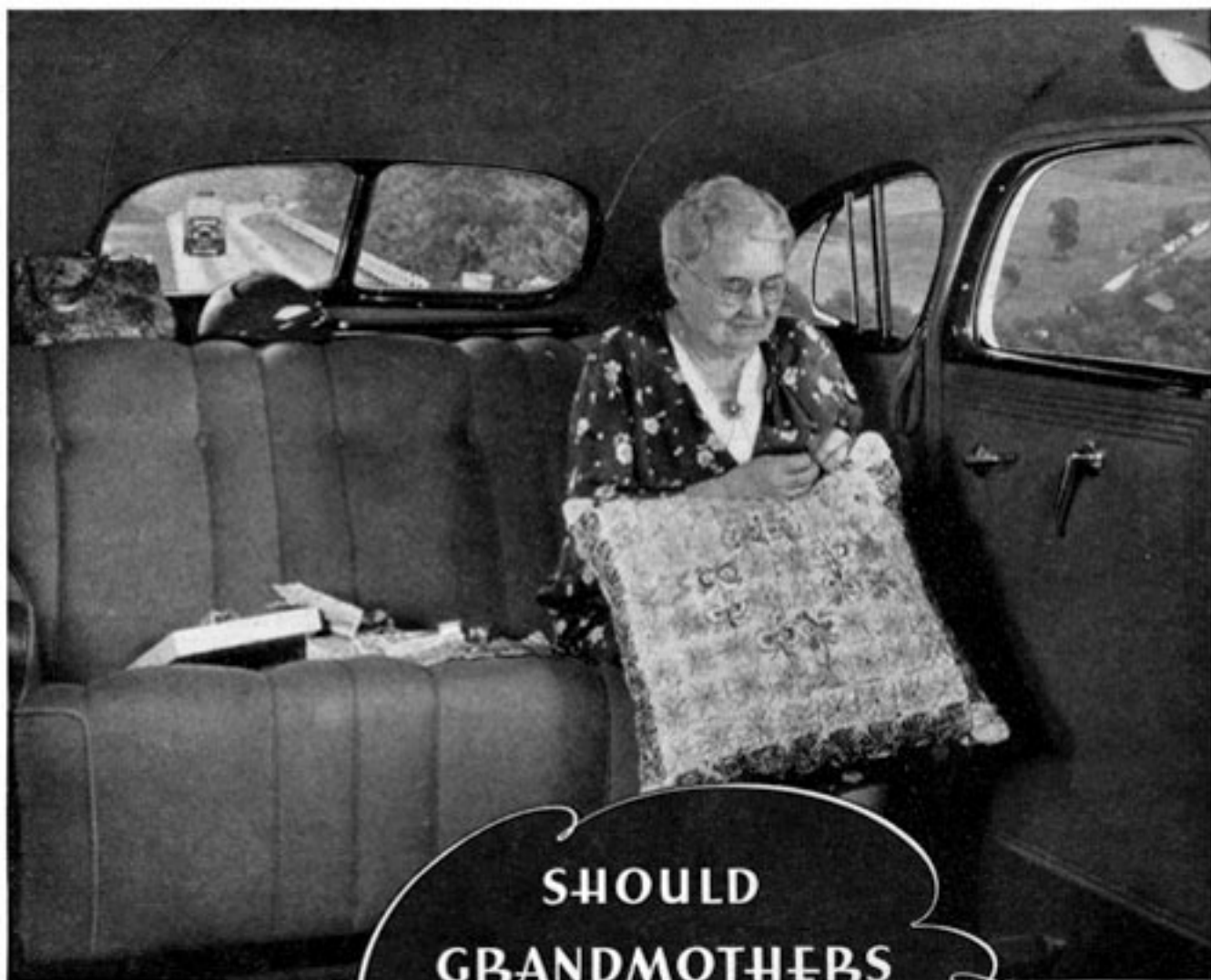
A car that gains its unique distinction in appearance from the fact that it is functionally designed from the inside out to do things as no motor car has ever done before.

Your Chrysler dealer will gladly show you the new Airflow Chryslers and their sensational companion cars which share many Airflow advantages . . . the 1935 Airstream Chryslers with prices as low as \$745 f. o. b. factory.

★ CHRYSLER AIRSTREAM SIX . . . 91 horsepower, 118-inch wheelbase. Six body types. Prices from \$745 to \$870. Four-Door Sedan \$810. New Convertible Coupe \$870. ★ CHRYSLER AIRSTREAM EIGHT . . . 105 horsepower, 121-inch wheelbase. Five body types. Prices from \$935 to \$995. Four-Door Sedan \$975. New Convertible Coupe \$995. **NEW LOW AIRFLOW PRICES.** ★ CHRYSLER AIRFLOW EIGHT . . . 115 horsepower, 121-inch wheelbase. Three body types. All models \$1245. ★ CHRYSLER AIRFLOW IMPERIAL . . . 130 horsepower, 128-inch wheelbase. Two body types. All models \$1475. ★ AIRFLOW CUSTOM IMPERIAL . . . 130 horsepower with 137-inch wheelbase. Sedan \$2245 . . . Sedan Limousine \$2145; and 150 horsepower, with 146-inch wheelbase. Sedan \$5000 . . . Sedan Limousine \$5145. All prices f. o. b. factory, Detroit. Time payments to fit your budget. Ask for the official Chrysler Motors Commercial Credit plan.







SHOULD  
GRANDMOTHERS

GO

*Globe Trotting?*



Mrs. Cartwright had heard it was possible to read in an Airflow Chrysler . . . so she tried the even more difficult task of threading a needle. "No trouble at all," she says.



"Why stay at home," says Mrs. Cartwright, "when you can travel like this." On her 2900 mile trip, Mrs. Cartwright sewed, watched the scenery or took naps . . . completely comfortable on any road.

"WHY NOT?" SAYS MRS. CARTWRIGHT  
"IF YOU CAN RIDE IN A

*Chrysler*"

A GREAT-GRANDMOTHER . . . and 71 years of age . . . Mrs. N. A. Cartwright, of California, has a keen interest in the good new things of life.

Having ridden from Los Angeles to Detroit in an Airflow Chrysler, she lost no time in calling the Chrysler factory on the phone to pour out her enthusiasm for the car.

"I had heard about the famous riding comfort," she said, "so I determined to see if I could do a little sewing on the way.

"I found I could thread my needle and sew with perfect ease as we traveled along at 60 miles an hour and better. In the course of the trip, I started and completed a patchwork cushion which I presented to my



**AIRFLOW**

granddaughter when we arrived.

"Everyone was amazed that I could have done such a thing at my age on this sort of trip. I told them it was no effort at all in a car like the Airflow Chrysler. I was really less tired after this 2900 mile trip than I have been after

**CHRYSLER**

just a few hours driving in other cars."

We appreciate Mrs. Cartwright's unsolicited and genuinely enthusiastic comments. We think that this very human story tells more than we possibly could about the kind of comfort

we have built into Chrysler cars.

Perhaps you haven't yet tried the Floating Ride in a Chrysler. Perhaps you have been missing something, which like Mrs. Cartwright, you would thoroughly enjoy.

Why not ride in a Chrysler and find out? In the luxurious Airflow or Airflow Imperial with automatic overdrive. Or in the Chrysler Airstream Six or Eight which embody many of the features introduced in Airflow . . . at the astonishingly low price of \$745 and up, list at factory. Any Chrysler dealer will gladly arrange a ride.

★ CHRYSLER AIRSTREAM SIX, \$745 to \$870. DE LUKE AIRSTREAM EIGHT, \$910 to \$1235. AIRFLOW CHRYSLER EIGHT, \$1245. AIRFLOW IMPERIAL, \$1475. CUSTOM AIRFLOW, \$2245 to \$5145. All prices list at factory, Detroit. Special equipment extra. Low monthly payments.

# A MOST Distinguished Ownership



PIONEERS are apt to be people who are sure of themselves . . . go their own way . . . make decisions with independence.

Naturally enough, the early purchasers of the Airflow Chrysler were that kind of people. Modern-minded, they investigated. Quick to appreciate, they bought.

It is gratifying to Chrysler that Airflow buyers are the happiest, most enthusiastic owners in all Chrysler history. They have registered their satisfaction in terms more glowing than anything Chrysler has ever said about the Airflow car.

In appreciation, and as a matter of general interest, Chrysler has published a little book called "The First Three Thousand," a roster of the first purchasers of the Airflow Chrysler.

If you are considering the purchase of a motor car, you will no doubt be interested in these distinguished Airflow owners and their comments about their cars.

The book is yours for the asking at any Chrysler dealer's. And any Chrysler dealer will gladly give you the first-hand opportunity to try an Airflow Chrysler for yourself . . . not just around the block . . . but on the kind of trip that will enable you to get a true picture of a new and altogether delightful kind of motoring.

# Chrysler

**AIRFLOW AIRSTREAM**



THE AIRFLOW EIGHT, SIX-PASSENGER SEDAN AT \$1245

☆ CHRYSLER AIRSTREAM SIX . . . 93 horsepower, 118-inch wheelbase. Six body types. Prices from \$745 to \$870. Four-Door Sedan \$810. New Convertible Coupe \$870. ☆ CHRYSLER AIRSTREAM EIGHT . . . 105 horsepower, 121-inch wheelbase. Five body types. Prices from \$915 to \$995. Four-Door Sedan \$975. New Convertible Coupe \$995. **NEW LOW AIRFLOW PRICES.** ☆ CHRYSLER AIRFLOW EIGHT . . . 115 horsepower, 121-inch wheelbase. Three body types. All models \$1245. ☆ CHRYSLER AIRFLOW IMPERIAL . . . 130 horsepower, 128-inch wheelbase. Two body types. All models \$1475. ☆ AIRFLOW CUSTOM IMPERIAL . . . 150 horsepower with 137-inch wheelbase. Sedan \$2245 . . . Sedan Limousine \$2345; and 150 horsepower, with 146-inch wheelbase, Sedan \$5000 . . . Sedan Limousine \$5145. All prices f. o. b. factory, Detroit. Time payments to fit your budget. Ask for the official Chrysler Motors Commercial Credit plan.




FOR 1935...



# Chrysler Airflow Styling

+ + + HAS A BRILLIANT NEW FLAIR + + +

 THERE'S a new swing and sweep to Airflow lines in the beautiful new Chryslers for 1935. Science and art were never more beautifully combined.

The new radiator lines . . . the new head-light treatment . . . the long tapering flow of the hood . . . the smart new louvers . . . they're dramatically different, yet thoroughly in the spirit of functional design.

Inside, the new Airflows continue the

modern note. And like smart, modern homes, they add softness and richness to refreshing simplicity.



*Enter . . . The Airstream*

SMART COMPANION CAR TO THE NEW CHRYSLER AIRFLOW

The new Airflows are delightfully easy to drive. With new perfected steering and easy shifting synchro-silent transmissions, these big luxurious cars handle as nimbly as a small roadster.

We invite you to see and try the new Chryslers soon . . . the new Airflows and their brilliant companion cars, the Chrysler Airstream Six and Eight, which make many of the Airflow's advantages available for the first time in cars of moderate price.



☆ CHRYSLER AIRSTREAM SIX . . . A handsome new six revealing Airflow influences . . . 90 horsepower . . . 118-inch wheelbase . . . Five body types. From \$745 to \$896. 4-Door Sedan \$836.  
☆ CHRYSLER AIRSTREAM EIGHT . . . A big, brilliantly-performing new Eight with 115 horsepower and 121-inch wheelbase . . . Four distinguished body types. From \$955 to \$1095.  
4-Door Sedan \$975. ☆ CHRYSLER AIRFLOW EIGHT . . . The exclusive advantages of Airflow design . . . 115 horsepower and 121-inch wheelbase . . . Six-passenger sedan, coupe and business coupe, all models \$1745. ☆ CHRYSLER AIRFLOW IMPERIAL . . . The fading performance of 130 horsepower . . . the roomier luxury made possible by 128-inch wheelbase . . . Six-passenger sedan and six-passenger coupe \$1475. ☆ AIRFLOW COUPE IMPERIAL . . . Magnificent sedan and sedan-limousine embodying the finest in Airflow craftsmanship . . . 130 horsepower with 117-inch wheelbase and 150 horsepower with 146-inch wheelbase. Prices as requested. ☆ Duplicate safety plate glass in all windows of all models at not more than \$20 additional. All prices f. o. b. factory, Detroit. Time payments to fit your budget. Ask for the official Chrysler Motors Commercial Credit plan.



# Chrysler for 1935



*The*  
**AIRFLOW CHRYSLERS**  
*... inspired by one hundred million miles of Airflow satisfaction*

ONE GREAT CAR inspires another! There are new Airflow Chryslers for 1935. And—there are new Airstream Chryslers for 1935. It's an exciting family... bringing a host of good new things... bringing the opportunity to enjoy really modern motoring to new

additional thousands.

The new Airflows arrest the eye. There's a perfect marriage of science and art in the new truly streamlined radiator design. Hood lines flow scientifically in proportions as graceful as a Grecian urn. The new lower design... the new headlight treatment... the new radiator grill... They're all dramatically different, yet thoroughly in the functional spirit of true Airflow design.

The modern features which aroused so much comment last year are here for 1935 of course... many of them greatly refined and enhanced in value. The drawing

room spaciousness... the seats wide as divans... the graciously wide doors... passengers carried between the axles near the center of balance... the unit-built frame and all-steel body, SAFEST IN THE WORLD... the increased vision.

The marvelous Floating Ride is finer than ever... made so by a new type spring with many more leaves of a new tapered design that permits quick flexing on little jolts, controlled flexing on big ones.

Automatic overdrive, of course, standard on the Airflow Imperials, optional on the Airflow Eights. That marvelous transmission improvement that changes gear ratios automatically at 45 miles an hour... lets you drive 60 miles an hour on less gas than 40... gives you the most miraculous thrill in country driving.



There's a new synco-silent transmission... easy and quick. New perfected steering... so sure and effortless that these big cars handle like a small roadster. Inside... the 1935 version of smart modern decoration. Retained—the gleam of chromium and forthright simplicity. Added—a softer, richer treatment of cushions, side and roof fabrics.

## *What Airflow Brings to Airstream*

"We'll build," said Chrysler engineers, "another line of cars that will give many of Airflow's advantages at much lower price."

See how they've done it. To the eye a striking family resemblance. In radiator, hood lines, sweeping windshield, tapering rear.

Yes, the rear seat has been moved forward. Engine forward, too, to get a more scientific distribution of weight... Airflow pioneered it last year. With this new distribution of weight the Airstream Six and Eight give a ride beyond any car at any price except the Airflow.

Worlds more room. Inches more head-room, leg-room, elbow-room and seat width. Wider doors.

These are the first moderate-sized cars the world has seen that will let a grown man or woman enter or exit any door gracefully!

Tapered spring leaves like the Airflow. Synco-silent transmission as in Airflow. Streamlining that really means something. Rich, smart modern interiors.

Hidden valves too. Surging power such as Chrysler knows so

well how to provide. Unmatched performance that only Chrysler gives... Marvelous new diamond-hard pistons. Use... or abuse... or high speed have little effect on them... High compression engines... Valve seat inserts that greatly reduce valve grinding. Chrysler pioneered them!

An Airstream Six... and Airstream Eight... just about the lowest priced quality cars in the world. Joining with the great Airflow line to give added thousands of Chrysler owners the newest and best in motoring.

Now more than ever before... you'll be happier with a Chrysler!

*The*  
**AIRSTREAM CHRYSLERS**  
*... entirely new, low priced streamlined six and eight*

**\* Chrysler Airstream Six**  
A handsome new Six revealing Airflow features. 93 h. p., 118-in. w. h. Five body types.

**\* Chrysler Airstream Eight**  
A big, brilliantly performing new Eight with 105 h. p. and 121-in. w. h. Four distinguished body types.

**\* Chrysler Airflow Eight**  
The exclusive advantages of Airflow design. 115 h. p. and 121-in. w. h. Six passenger sedan, coupe and business coupe.

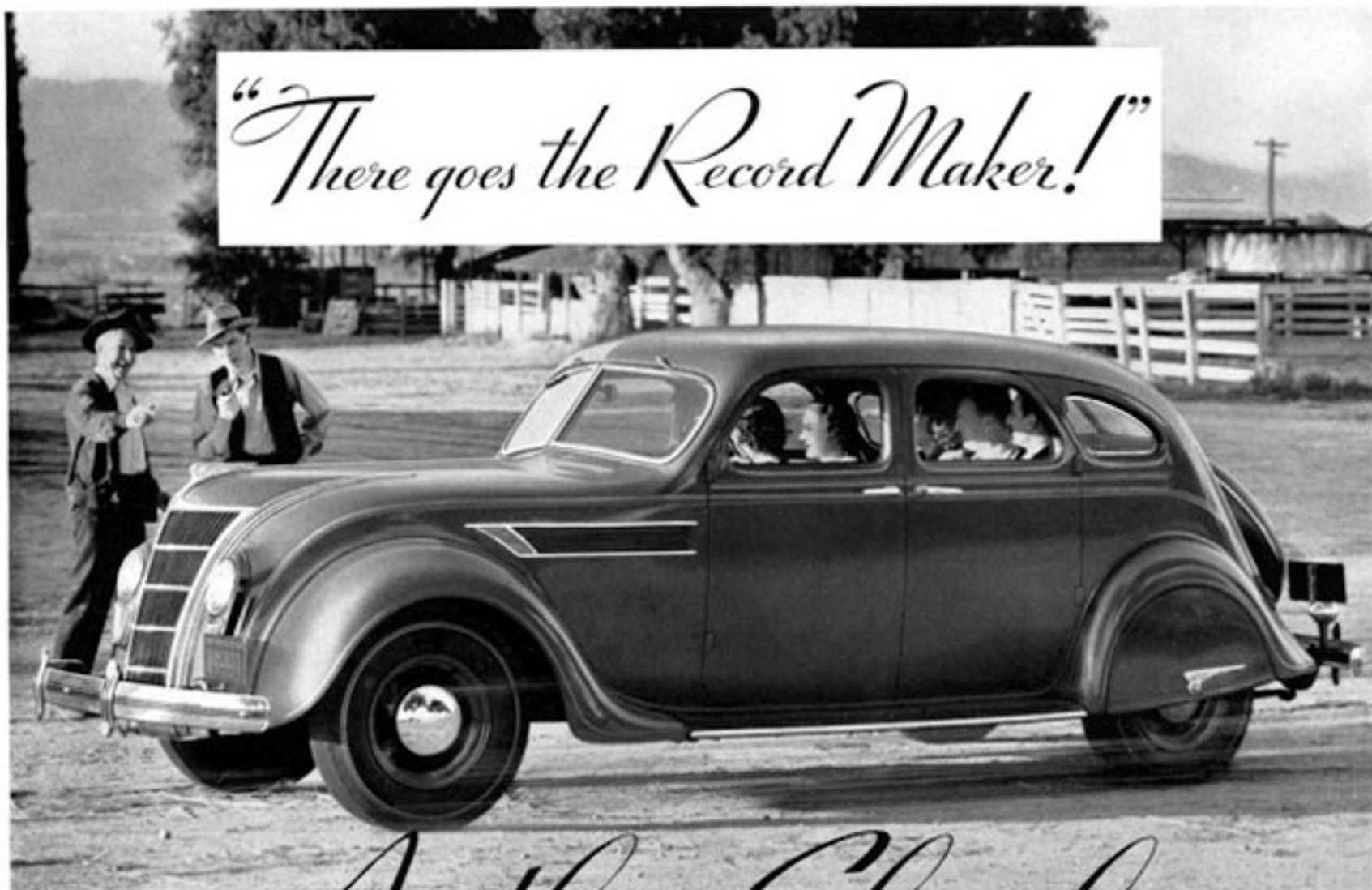
**\* Chrysler Airflow Imperial**  
The finishing performance of 130 h. p., the money luxury made possible by 128-in. w. h. Six passenger sedan and the four-passenger coupe.

**\* Airflow Custom Imperial**  
Magnificent sedans and sedan convertibles embodying the finest in Airflow craftsmanship. 130 h. p., with 127-in. w. h. and 150 h. p. with 146-in. w. h.





*"There goes the Record Maker!"*



# Airflow Chrysler

## 69 SPEED RECORDS HELD SINCE LAST AUGUST

It's great to drive the record-maker . . . it's thrilling to know that the car you own is the undisputed holder of 69 unlimited stock car speed records.

Last August, under A.A.A. supervision, a stock Airflow Chrysler smashed 69 flying start closed car, high gear speed records, from one mile to 2,000 miles and 24 hours. Among the records were 95.7 miles per hour for one mile . . . 84.43 miles per hour for 24 hours, covering 2,026.405 miles. They remain untouched today.

On top of that, the same Airflow Chrysler crossed the continent from Los Angeles to New York with the astonishing economy record of 18.1 miles per gallon.

The plain fact is that the design of the Airflow Chrysler gives it

very special advantages over any other car.

Pure streamline enables it to travel faster . . . and use less fuel. The automatic over-drive lets you drive at 60 on actually less gas than 40 in conventional gear. The unit body and frame provides the strongest, quietest body on any car. The scientific weight distribution . . . at its farthest development in

Airflow . . . gives a Floating Ride simply beyond compare.

You'll never realize what Airflow means until you get into an Airflow Chrysler and ride for fifty miles. If you do that, you'll find it hard to be completely happy with any other motor car. We'll be delighted to place the proof before you.

☆ CHRYSLER AIRSTREAM SIX . . . 90 horsepower, 118-inch wheelbase. Six body types. Prices from \$745 to \$870. Four-Door Sedan \$810, New Convertible Coupe \$870.

☆ NEW CHRYSLER DELUXE AIRSTREAM EIGHT . . . 105 and 110 horsepower, 121- and 135-inch wheelbase. Eight body types. Prices from \$950 to \$1215. Four-Door Sedan \$985, Convertible Coupe \$1015.

☆ CHRYSLER AIRFLOW EIGHT . . . 115 horsepower, 125-inch wheelbase. Three body types. All models \$1245.

☆ CHRYSLER AIRFLOW IMPERIAL . . . 130 horsepower, 128-inch wheelbase. Two body types. All models \$1475.

☆ AIRFLOW CUSTOM IMPERIAL . . . 130 horsepower with 137-inch wheelbase, Sedan \$2245 . . . Sedan Limousine \$2145; and 150 horsepower, with 146-inch wheelbase, Sedan \$3090 . . . Sedan Limousine \$3145.

All prices list at factory, Detroit; special equipment extra. Time payments to fit your budget. Ask for the official Chrysler Motors Commercial Credit plan.



ON THE TRACK AT GREAT SALT DESERT, AUGUST 1934

# Motoring's Highest Adventure



## Chrysler's Floating Ride

AIRFLOW or Airstream . . . all Chrysler cars have the incomparable Chrysler Floating Ride.

Pioneered in Airflow last year, it reaches a pinnacle of perfection in the great new Chryslers for 1935.

Riding near the center of balance is part of it. Carrying the engine over the front axle also contributes. Chrysler's new tapered leaf springs add much. Mutually reinforcing all steel bodies and frames absorb road jars and jolts. The action of springs is slowed to the pleasing rhythm of a normal human walk.

Interesting as the technical factors are,

the real sensation comes from riding in the car. You'll find the combination of

Floating Ride and Chrysler's inimitable speed and power the world's most thrilling adventure in motor car travel.



Chrysler Airstream Eight Touring Sedan

☆ CHRYSLER AIRSTREAM SIX . . . A handsome new Six revealing Airflow influence. 91 h. p., 118-in. w. b. Five body types. From \$745 to \$850, 4-Door Sedan \$830.

☆ CHRYSLER AIRSTREAM EIGHT . . . A big, brilliantly-performing new Eight with 105 h. p., 121-in. w. b. Four distinguished body types. From \$915 to \$995, 4-Door Sedan \$975.

☆ CHRYSLER AIRFLOW EIGHT . . . The exclusive advantages of Airflow design, 115 h. p. and 121-in. w. b. Six passenger sedan, coupe and business coupe, all models \$1249.

☆ CHRYSLER AIRFLOW IMPERIAL . . . The flashing performance of 130 h. p.; the rosy luxury made possible by 128-in. w. b. Six passenger sedan and six-passenger coupe \$1475.

☆ AIRFLOW CUSTOM IMPERIAL . . . Embodying the finest in Airflow craftsmanship, 110 h. p., with 117-in. w. b. Sedan \$2245; Sedan Limousine \$2145 . . . 110 h. p. with 146-in. w. b.; Sedan \$3000; Sedan Limousine \$5145.

☆ Duplicate safety plate glass in all windows of all models at not more than \$10 additional. All prices f. o. b. Factory, Detroit. Time payments to fit your budget. Ask for the official Chrysler Motors Commercial Credit plan.



# EXCITING NEW *Chryslers* for 1935

## ONE GREAT CAR INSPIRES ANOTHER

ONE GREAT CAR inspires another. There are new Airflow Chryslers for 1935. And—there are new Airstream Chryslers for 1935.

It's an exciting family . . . bringing a host of good new things . . . bringing the opportunity to enjoy really modern motoring to new additional thousands.

The new Airflows arrest the eye. There's a perfect marriage of science and art in the new truly streamlined radiator design. Hood lines flow scientifically in proportions as graceful as a Grecian urn. The new lower design . . . the new head-light treatment . . . the new radiator grill . . . They're all dramatically different, yet thoroughly in the functional spirit of true Airflow design.

The modern features which aroused so much comment last year are here for 1935 of course . . . many of them greatly refined and enhanced in value. The drawing room spaciousness . . . the seats wide as divans . . . the graciously wide doors . . . passengers carried between the axles near the center of balance . . . the unit-



THE LUXURY OF A SPACIOUS DIVAN

built frame and all-steel body, SAFEST IN THE WORLD . . . the increased vision.

The marvelous Floating Ride is finer than ever . . . made so by a new type spring with many more leaves of a new tapered design that permits quick flexing on little jolts, controlled flexing on big ones.

Automatic overdrive, of course, standard on the Airflow Imperials, optional on the Airflow Eights. That marvelous transmission improvement that changes gear ratios automatically at 45 miles an hour . . . lets you drive 60 miles an hour on less gas than 40 . . . gives you the most miraculous thrill in country driving.

There's a new synco-silent transmission . . . easy and quick.

New perfected steering . . . so sure and effortless that these big cars handle like a small roadster.

Inside . . . the 1935 version of smart modern decoration. Retained

—the gleam of chromium and forthright simplicity. Added—a softer, richer treatment of cushions, side and roof fabrics.

### What Airflow Brings To Airstream

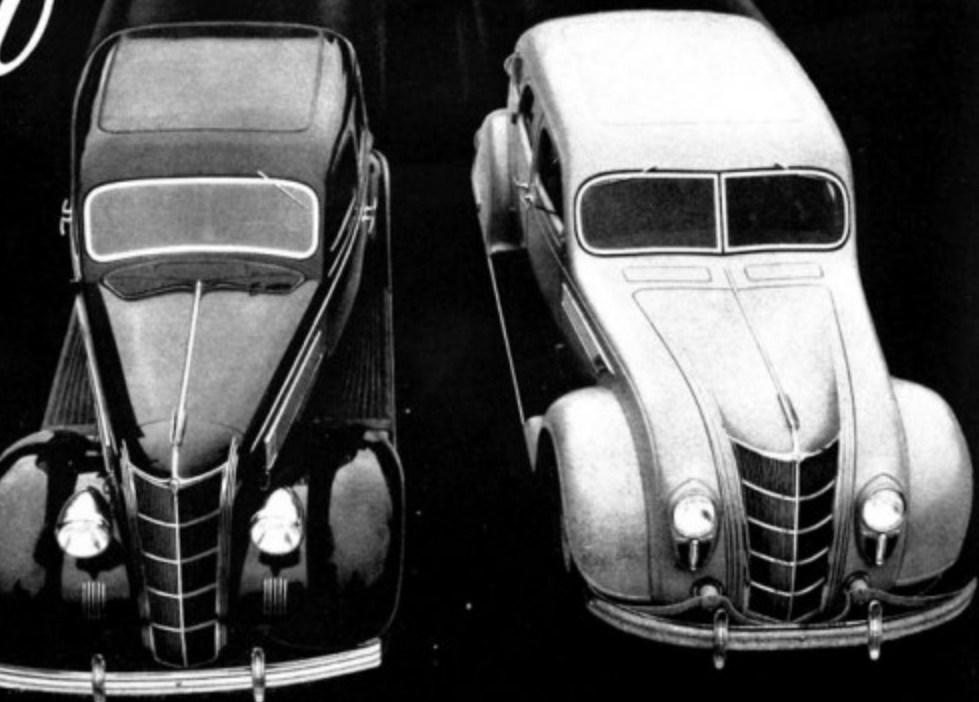
"We'll build," said Chrysler engineers, "another line of cars that will give many of Airflow's advantages at much lower price."

See how they've done it. To the eye a striking family resemblance. In radiator, hood lines, sweeping windshield, tapering rear.

Yes, the rear seat has been moved forward. Engine forward, too, to get a more scientific distribution of weight . . . Airflow pioneered it last year. With this new distribution of weight, the Airstream Six and Eight give a ride beyond any car at any price except the Airflow.

Worlds more room. Inches more head-room, leg-room, elbow-room and seat width. Wider doors. These are the first moderate-sized cars the world has seen that will let a grown man or woman enter or exit any door *graciously!*

Tapered spring leaves like the Airflow. Synco-silent transmission as in Airflow. Streamlining that really means something.



The AIRSTREAM

The AIRFLOW

*Chrysler Airstream Six* . . . 95 h. p., 118-in. w. b. Five body types.

*Chrysler Airstream Eight* . . . 105 h. p., 121-in. w. b. Four body types.

*Chrysler Airflow Eight* . . . 115 h. p., 121-in. w. b. Three body types.

*Chrysler Airflow Imperial* . . . 130 h. p., 128-in. w. b. Two body types.

*Airflow Custom Imperial* . . . Magnificent sedans and sedan-limousines. 130 h. p., with 137-in. w. b., and 150 h. p. with 146-in. w. b.

Modern interiors that are rich and smart.

Hidden values too. Surging power such as Chrysler knows so well how to provide. Unmatched performance that only Chrysler gives . . . Marvelous new diamond-hard pistons. Use . . . or abuse . . . or high speed have little effect on them . . . High compression engines . . . Alloy valve seat inserts that greatly reduce

valve grinding. Chrysler pioneered them!

An Airstream Six . . . and Airstream Eight . . . just about the lowest priced quality cars in the world. Joining with the great Airflow line to give added thousands of Chrysler owners the newest and best in motoring.

Now more than ever before . . . you'll be happier with a Chrysler!

COMING OR GOING...STREAMLINE WITH A REASON



CHRYSLER AIRFLOW EIGHT SEDAN \$12409



WHEN you step through the big, inviting door of an Airflow Chrysler Imperial, you're in a whole new motoring world.

Pleasant surprises burst on you one after another. Such room, such wide, comfortable seats, such a panoramic view through the wide-vision windows.

It's positively uncanny the way bumps melt into nothingness beneath this astonishing car. It's just plain, provable truth that you can read or write in it as you go . . . and that means the smoothest ride it is possible to have.

The automatic overdrive is a magical thing . . . it's thrilling . . . and what it does is really important. By slowing down engine revolutions at speeds over 45 . . . it gives remarkable gasoline econ-

AIRFLOW

Chrysler

WITH AUTOMATIC OVERDRIVE

omy . . . saves oil . . . reduces wear.

The sheer comfort of riding in the Airflow Chrysler is different from all other cars. It is a basic, inherent part

of design and construction. It is increasing daily the number of people who own the Airflow and proclaim it without reservation the most entirely satisfactory motor car ever built.

You'll never know what motoring luxury really can mean until you get inside the Airflow Chrysler. Any Chrysler dealer will be glad to give you the opportunity.

☆ CHRYSLER AIRSTREAM SIX, \$745 to \$870. DE LUXE AIRSTREAM EIGHT, \$930 to \$1235. AIRFLOW CHRYSLER EIGHT, \$1245. AIRFLOW IMPERIAL, \$1475. CUSTOM AIRFLOWS, \$2245 to \$5145. \*All prices list at factory, Detroit. Special equipment extra.



★ ★ ★

★ ★ ★



DOES YOUR FAMILY RIDEIN THE *World's Safest Car?***AIRFLOW CHRYSLER**

OFF TO SCHOOL . . . downtown to shop . . . week-ending in the country . . . high-pressure traffic everywhere.

You can't always drive yourself . . . you can't do a thing about the other fellow's driving . . . but you and your family can ride in the safest car on the roads.

In an Airflow Chrysler you ride *inside* the frame. Bridgelike girders of steel run from end to end of the car . . . over you, below you and on all sides. Welded inseparably to the all-steel body, they surround you with a single unit of crash-proof, vibration-proof steel. Only the Airflow, of all cars in the world, offers this protection.

Balanced like an arrow in flight, the Airflow has its engine weight far forward to keep it straight and true on the road. Its spring action is tuned to the slow, easy rhythm of a walk. It glides—it won't bounce—at any speed. It stops with the sure power

of Chrysler's matchless hydraulic brakes.

You can't judge an Airflow Chrysler by looking at it. You must experience its vibrationless Floating Power . . . ride in it and drive it to realize why it has the most enthusiastic owners in motor car history. Any Chrysler dealer will be delighted to give you a 50-mile demonstration.

☆ CHRYSLER AIRSTREAM SIX . . . 95 horsepower, 115-inch wheelbase. Six body types. Prices from \$745 to \$875. Four-Door Sedan \$810. New Convertible Coupe \$875.

☆ CHRYSLER AIRSTREAM EIGHT . . . 105 horsepower, 125-inch wheelbase. Five body types. Prices from \$915 to \$975. Four-Door Sedan \$975.

#### NEW LOW AIRFLOW PRICES

☆ CHRYSLER AIRFLOW EIGHT . . . 115 horsepower, 125-inch wheelbase. Three body types. All models \$1245.

☆ CHRYSLER AIRFLOW IMPERIAL . . . 130 horsepower, 128-inch wheelbase. Two body types. All models \$1475.

☆ AIRFLOW CUSTOM IMPERIAL . . . 130 horsepower, with 117-inch wheelbase. Sedan \$2245 . . . sedan Limousine \$2145; and 150 horsepower, with 140-inch wheelbase, sedan \$3600 . . . sedan Limousine \$3145.

All prices list at factory, Detroit. Time payments to fit your budget. Ask for the official Chrysler Motors Commercial Credit plan.

**AIRSTREAM****CHRYSLERS****\$745 UP**

# CHRYSLER

# FOR 1935



## CHRYSLER AIRSTREAM SIX

A handsome new Six revealing Airflow influence in exceptional roominess, riding comfort and scientific streamlining. 91 horsepower, 118-inch wheelbase. Five body types.

## CHRYSLER AIRSTREAM EIGHT

A big, brilliantly-performing new Eight with 101 horsepower and 121-inch wheelbase. New weight distribution and many other advanced features. Four distinguished body types.

## CHRYSLER AIRFLOW EIGHT

The exclusive advantages of Airflow design and construction in a beautiful new Eight of 111 horsepower and 121-inch wheelbase. Six-passenger sedan, coupe and business coupe.

## CHRYSLER AIRFLOW IMPERIAL

The finest performance of 130 horsepower; the money luxury made possible by 128-inch wheelbase. Two smart body types . . . Six-passenger sedan and six-passenger coupe.

## AIRFLOW CUSTOM IMPERIAL

Magnificent sedan and sedan-limousines embodying the finest in Airflow craftsmanship. 130 horsepower with 117-inch wheelbase; and 150 horsepower with 146-inch wheelbase.

"YOU GET THE GOOD THINGS FIRST IN A CHRYSLER"



weight, the Airstream Six and Eight give a ride beyond any car at any price except the Airflow.

Worlds more room. Inches more head-room, leg-room, elbow-room and seat width. Wider doors. These are the first moderate-sized cars the world has seen that will let a grown man or woman enter or exit any door gracefully!

Tapered spring leaves like the Airflow. Syncro-silent transmission as in Airflow. Streamlining that really means something. Rich, smart modern interiors.

Hidden values too. Surging power such as Chrysler knows so well how to provide. Unmatched performance that only Chrysler gives. . . . Marvelous new diamond-hard pistons. Use . . . or abuse . . . or high speed have little effect on them. . . . High compression engines. . . . Valve seat inserts that greatly reduce valve grinding. Chrysler pioneered them!

An Airstream Six . . . and Airstream Eight . . . just about the lowest-priced quality cars in the world. Joining with the great Airflow line to give added thousands of Chrysler owners the newest and best in motoring.

Now more than ever before . . . you'll be happier with a Chrysler!

decoration. Retained . . . the gleam of chromium and forthright simplicity. Added . . . a softer, richer treatment of cushions, side and roof fabrics.

## What Airflow Brings to Airstream

"We'll build," said Chrysler engineers, "another line of cars that will give many of Airflow's advantages at much lower price."

See how they've done it. To the eye a striking family resemblance. In radiator, hood lines, sweeping windshield, tapering rear.

Yes, the rear seat has been moved forward. Engine forward, too, to get a more scientific distribution of weight . . . Airflow pioneered it last year. With this new distribution of

ever . . . made so by a new type spring with many more leaves of a new tapered design that permits quick flexing on little jolts, controlled flexing on big ones.

Automatic overdrive, of course, standard on the Airflow Imperials, optional on the Airflow Eights. That marvelous transmission improvement that changes gear ratios automatically at 45 miles an hour . . . lets you drive 60 miles an hour on less gas than 40 . . . gives you the most miraculous thrill in country driving.

There's a new syncro-silent transmission . . . easy and quick. New perfected steering . . . so sure and effortless that these big cars handle like a small roadster.

Inside . . . the 1935 version of smart modern

## Last Year's Most Exciting Car MAKES THIS YEAR'S MOST EXCITING NEWS

ONE GREAT CAR inspires another! There are new Airflow Chryslers for 1935. And—there are new Airstream Chryslers for 1935.

It's an exciting family . . . bringing a host of good new things . . . bringing the opportunity to enjoy really modern motoring to new additional thousands.

The new Airflows arrest the eye. There's a perfect marriage of science and art in the new

truly streamlined radiator design. Hood lines flow scientifically in proportions as graceful as a Grecian urn. The new louver design . . . the new headlight treatment . . . the new radiator grill . . . They're all dramatically different, yet thoroughly in the functional spirit of true Airflow design.

The modern features which aroused so much comment last year are here for 1935 of

course . . . many of them greatly refined and enhanced in value. The drawing room spaciousness . . . the seats wide as divans . . . the graciously wide doors . . . passengers carried between the axles near the center of balance . . . the unit-built frame and all-steel body, SAFEST IN THE WORLD . . . the increased vision.

The marvelous Floating Ride is finer than





# MILLIONS OF MOTORISTS AGREE THEY'RE THE WORLD'S SAFEST CARS



*Only the 4 Chrysler-built Cars  
offer these 5 Vital Features—*

IT HAS BEEN SAID so many times...and I proved so many times...that it is no longer a matter of argument.

"Chrysler Motors cars are the safest."

Undoubtedly that is one reason why more people are buying Chrysler Motors cars...Chrysler, De Soto, Dodge and Plymouth...than ever before.

They want the instantaneous safety of

genuine hydraulic brakes. They want the security and peace of mind that only an all-steel body can give.

But there are other reasons, too. Every Chrysler Motors car has patented Floating Power to protect you from the slightest trace of engine vibration. Every one of them has Re-distribution of Weight to ensure a smooth, gliding back-seat ride

- 1 GENUINE HYDRAULIC BRAKES
- 2 SAFETY-STEEL BODIES
- 3 PATENTED FLOATING POWER
- 4 RE-DISTRIBUTION OF WEIGHT
- 5 AMAZING ECONOMY IN GAS AND OIL

(Above) Hydraulic Brakes are always equalized. Smooth, quick stops...and fewer re-lining jobs in the bargain.

(Left above) The new Airflow Chrysler Eight. All body models now \$1245. Airstream Chrysler models are now as low as \$745. All prices are list at the factory, Detroit.

over all kinds of roads, without "pitching."

And whether you pay \$500 or \$5,000...there's a Chrysler Motors car that will save you more money in operating costs than any other car of similar wheel-base or price class on the market today.



A SMOOTH, gliding ride...no "pitching."

Add up those features listed above. Five of them. They are the basic essentials of safety, comfort and economy.

Yet you will find that Chrysler Motors cars...Chrysler, De Soto, Dodge and Plymouth...are the only cars that have all five. It will pay you to bear that well in mind when you trade in your present car.



SUPERIOR ENGINEERING on Chrysler Motors cars means gas and oil economy.

YOU GET THE GOOD THINGS FIRST FROM

*Chrysler*  
**MOTORS**

**CHRYSLER · DE SOTO · DODGE · PLYMOUTH**

Inspired by  
one hundred million  
miles of Airflow satisfaction



## MOTORING'S HIGHEST ADVENTURE

# Chrysler's FLOATING RIDE

THE FINE new things in the beautiful new Chryslers for 1935 are the direct heritage of the satisfaction of thousands of Airflow Chrysler owners.

Both the new Airflow and Airstream Chryslers embody Chrysler's inimitable Floating Ride . . . introduced last year as the most revolutionary development in a decade . . . further enhanced in this year's Chryslers . . . setting a trend that has profoundly influenced all motor car design.

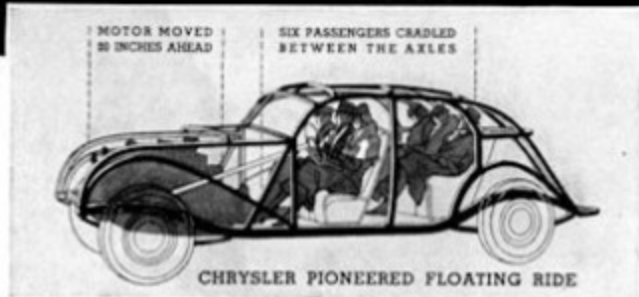
As the originator of more scientific weight distribution, Chrysler has carried it to its finest perfection . . . united it with mutually-reinforcing bodies and frames to give the utmost in safety and steadiness on the road . . . increased

its effectiveness with new tapered leaf springs which give easy flexing for little jolts, controlled flexing on big ones.

Both the Airstream and Airflow also embody many other fine new features. Perfected steering that gives these big cars the easy handling qualities of a

small roadster. Syncro-silent transmissions for effortless gear-shifting. Even lower center of gravity. New beauty in modern interiors and sweeping exterior lines.

Airflow or Airstream, you'll delight in the distinguished Chryslers for



☆ X-Ray view of Airflow weight distribution and unit all-steel frame and body construction ☆

1935. The cost is less than you might think. Any Chrysler dealer will gladly give you a thorough demonstration.

☆ CHRYSLER AIRSTREAM SIX . . . A handsome new six revealing Airflow infection. 90 h. p., 113-in. w. h. Five body types. From \$745 to \$800. 4-Door sedan \$830.

☆ CHRYSLER AIRSTREAM EIGHT . . . A big, brilliantly performing new Eight with 105 h. p. and 121-in. w. h. Four distinguished body types. From \$915 to \$995. 4-Door sedan \$975.

☆ CHRYSLER AIRFLOW EIGHT . . . The exclusive advantage of Airflow design. 115 h. p. and 121-in. w. h. Six-passenger sedan, coupe and business coupe, all models \$1245.

☆ CHRYSLER AIRFLOW IMPERIAL . . . The fading performance of 110 h. p.; the roomy luxury made possible by 128-in. w. h. Six-passenger sedan and six-passenger coupe, \$1475.

☆ AIRFLOW CUSTOM IMPERIAL . . . Embodying the finest in Airflow craftsmanship 130 h. p. with 137-in. w. h. Sedan \$2245; Sedan Limousine \$2345 . . . 150 h. p. with 140-in. w. h.; Sedan \$3000; Sedan Limousine \$3145.

☆ Duplicate safety glass in all windows of all models at not more than \$10 additional. All prices f. o. b. factory, Detroit. Taxes payable to your dealer. Ask for the official Chrysler Motor Commercial Credit plan.



CHRYSLER AIRSTREAM '745 AND UP

EVERY STREET IS *Easy Street*

CHRYSLER AIRFLOW '1245 AND UP

IN A *Chrysler!* ★ ★ ★

It's a new kind of ride . . . but it's more than that. It's a whole new adventure in travel that awaits you in the Chryslers of 1935.

Words can't tell you what it's like. You have to *feel* the sensation of riding in long, easy glides instead of jolts and lurches. You have to *feel* the freedom and lift of being wholly untrammelled by wind-drag. You have to *feel* the thrill of Chrysler's dynamic acceleration and amazingly effortless speed. You have to *experience* an

**AIRFLOW or AIRSTREAM. Chrysler gives you new weight distribution and Floating Ride in its finest, farthest development . . .**

ease of handling that you've never even imagined before.

Airflow brought something entirely new into motoring. New pleasures as well as new appearance . . . new sensations as well as new engineering . . . new luxury as well as new safety.

Now the Chrysler Airstream joins

with Airflow to bring this new kind of travel to lower-price fields . . . to give added thousands a chance to enjoy it.

A Chrysler at any price is a Chrysler . . . and that means it's different from all other cars. Just how different it is . . . *how far ahead it is* . . . you can best decide

for yourself by the ride a Chrysler dealer is eager to offer you.

★ CHRYSLER AIRSTREAM SIX . . . 91 h. p., 118-in. w. h. Five body types. Prices from \$1761 to \$2000. Four-Door Sedan \$1810.

★ CHRYSLER AIRSTREAM EIGHT . . . 105 h. p., 121-in. w. h. Four body types. Prices from \$2011 to \$2295. Four-Door Sedan \$2075.

#### NEW LOW AIRFLOW PRICES

★ CHRYSLER AIRFLOW EIGHT . . . 115 h. p. and 123-in. w. h. Three body types. All models \$1245.

★ CHRYSLER AIRFLOW FIFTEEN . . . 110 h. p., 128-in. w. h. Two body types. All models \$1475.

★ AIRFLOW CUSTOM IMPERIAL . . . Embodiment of the finest in Airflow craftsmanship 110 h. p. with 117-in. w. h. Sedan \$2245; Sedan Limousine \$2345 . . . 110 h. p. with 140-in. w. h.; Sedan \$2000; Sedan Limousine \$2145.

★ All prices f. o. b. factory, Detroit. Taxes, license to fit your budget. Ask for the official Chrysler Motors Commercial Credit plan.