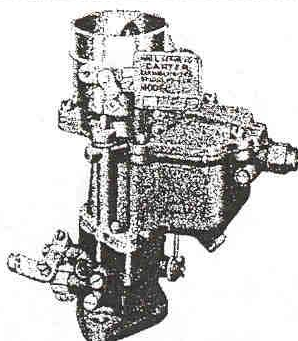


CAR SERIAL NUMBERS

5068501
and higher

MOTOR SERIAL NUMBERS

1001
and higher



**DE SOTO
MODEL
"SE"
1934**

DOWN-DRAFT CARBURETOR E6B1—LIST PRICE \$20.00

A \$4.00 exchange allowance is deducted from the list price if buyer turns in the carburetor which is replaced by an E6B1

CARBURETOR SPECIFICATIONS

De Soto Six Cylinder Engine: 3 3/8 Inch (85.725 mm) Bore, 4 1/2 Inch (114.30 mm) Stroke

Dimensions: Flange size, 1 1/2 inch (38.1 mm).

Throttle bore, 1-11/16 inch (42.86 mm).

Main venturi, 1-9/32 inch (32.54 mm) I. D.

Idle Orifice Tube: Jet size, .0276 inch (.70 mm) drill.
(1.30 mm) drill.

Economizer in body—size, .053-.055 inch (1.35-1.40 mm) diameter.

Idle passage air bleed (through plug) size, .050-.052 inch

Idle Ports: Upper port size, .062 to .064 inch (1.58-1.63 mm) diameter.

Bottom of port located .004 to .008 inch (.10 to .20 mm) above top edge of valve.

Lower port size, .053 to .057 inch (1.35 to 1.45 mm) drill.
(For idle adjustment screw.)

Float Setting: Top of float 5/64 inch (1.98 mm) below top surface of carburetor body casting. (Plus or minus 1/64 inch (.397 mm)).

Accelerating Pump: Type, delayed action.

Stroke: Summer setting (inner hole, short stroke) 1/4 inch (6.35 mm).

Intermediate setting (center hole) 7/16 inch (11.11 mm);

Winter setting (outer hole, long stroke) 5/8 inch (15.88 mm).

Pump intake passage, size 1/8 inch (3.18 mm).

Pump needle seat size No. 52 (1.61 mm) drill.

Pump (discharge) jet size .0354 inch (.90 mm) drill.

Vent Tube: Air bleed through plug in diffuser, size .0315 inch (.80 mm) drill.

Accelerating Jets: 2—.0354 (.90 mm) 21/64 inch (8.33 mm) from end. 2—.0354 (.90 mm) 1-1/64 inches (25.8 mm) from end.

Main Metering Screw: Calibrated to flow 278 to 282 cc. per minute. (Do not gauge for size. If in doubt, replace with new part).

Vent: (To float chamber) Outside: Size 3/16 inch (4.76 mm) drill.

Step-up Jet (Power Orifice): .0374 inch (.95 mm) drill.

FOR READINGS BELOW, VIEW CARBURETOR WITH FLANGE DOWN AND FLOAT CHAMBER AT RIGHT.

Throttle Lever: Adjusting—on left side, length 1 1/4 inches (31.75 mm) when open points up.

Choker: Butterfly type, with compensating (poppet) air valve. Choker stop lever in front.

Throttle and Choke Valves: Interconnected to open throttle valve to fast idle position when choke is in use.

Gasoline Intake Needle: Triangular, horizontal. No. 42 (2.37 mm) drill in needle seat.

Set Idle Adjustment Screw: 1/2 to 1 1/4 turns open. For richer mixture turn screw out. Do not idle engine below 300 rpm. or 6 miles per hour.

Motor Tune-Up—Be Accurate! Always Use Feeler Gauges!

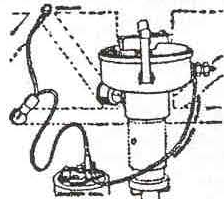
Caution: Change worn or leaky flange gaskets. Tighten manifold bolts and test compression before adjusting carburetor.



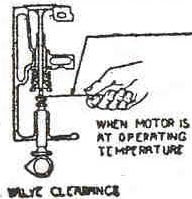
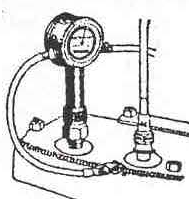
Spark
Plug Gap
.025"



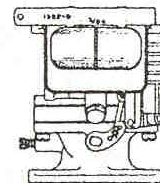
Set
Breaker Points
.020"



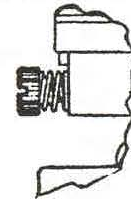
Use Timing Light or Motor Gauge
Breaker points to open .004" or 3° After T.D.C.
Note: Pointer on timing chain cover registers zero on vibration damper marking when No. 1 cylinder is at top dead center.



Set Valves
Intake .005"
Exhaust .007"



Use Gauge
5/64 Inch



Idle Adjustment
Screw Setting
1/2 to 1 1/4
Turns Open

CARBURETOR ADJUSTMENTS

If carburetor loads up after considerable service, check float level. Wear on lip of float lever will raise float level. Before adjusting float, be sure float lever pin plug is firmly seated. Reset float level by bending lip of float lever away from needle to raise level, or bend lip toward needle to lower float level. Bend vertical lip of float only.

If motor stalls while idling, set throttle lever adjusting screw so motor runs approximately 300 r.p.m. Then set idle adjustment screw as instructed above. If these adjustments do not correct the trouble, remove idle orifice tube and plug assembly and clean with compressed air.

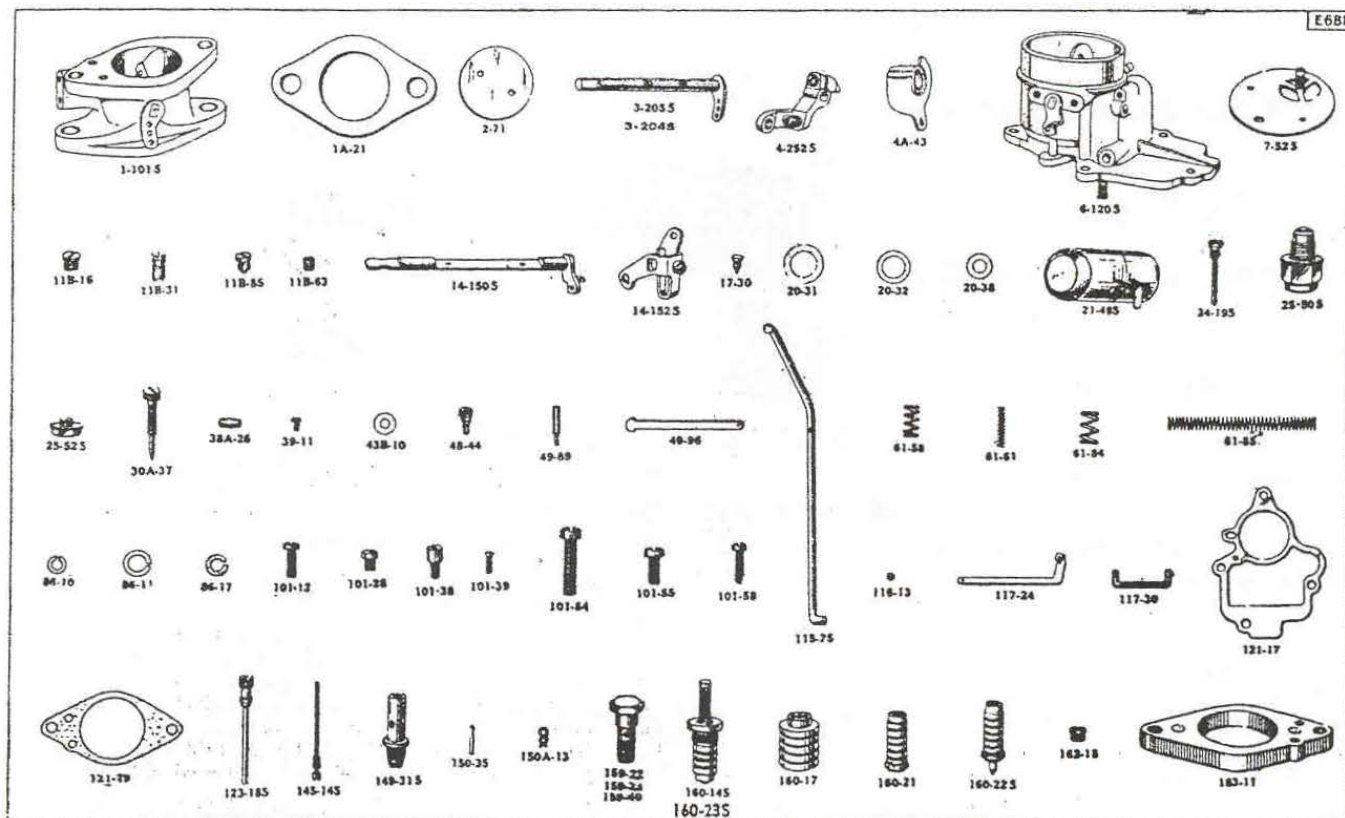
If acceleration is not satisfactory remove pump jet and clean with compressed air. Also examine pump link setting. Pump link has three holes giving short, medium and long strokes. If link is set to short stroke, reset to give longer stroke to pump piston. In hot weather, high altitudes, or

Caution: Do not attempt to gauge metering jets with drills. These jets have been flow-tested, to insure correct fuel flow.

Copyright 1937

by Carter Carburetor Corporation





De Soto "SE" 1934—No. E6B1—List Price \$20.00

WHEN SERVICING, USE GASKET ASSORTMENT No. 112—List Price \$0.40

Part No.	PARTS LIST	List Price	Part No.	PARTS LIST	List Price
1-1015	Body flange assembly.....	\$2.25	61-61	Step-up spring05
1A-71	Flange gasket—Steelbestos—1½" S. A. E.....	.05	61-84	Idle adjustment screw spring.....	.05
2-71	Throttle valve20	61-85	Pump spring10
3-2045	Throttle shaft and arm assembly.....	.60	86-10	Lock washer (11/64" I. D.).....	.01
3-2055	Throttle shaft and arm assembly (Superseded by 3-2045)60	86-11	Lock washer (9/32" I. D.).....	.01
4-2525	Throttle lever assembly.....	.40	86-17	Lock washer (15/64" I. D.).....	.01
4A-43	Throttle shaft dog.....	.20	101-12	Throttle lever clamp screw.....	.05
6-1205	Air horn assembly.....	2.50	101-28	Choker lever clamp screw.....	.05
7-525	Choker valve assembly.....	.50	101-38	Choker lever stop screw.....	.05
11B-16	Pump jet passage plug.....	.10	101-39	Throttle valve screw.....	.2 for .05
11B-31	Idle hole plug.....	.10	101-54	Flange attaching screw.....	.05
11B-40	Rivet plug02	101-55	Air horn attaching screw.....	.05
11B-41	Rivet plug02	101-58	Throttle adjusting screw.....	.05
11B-55	Needle retainer plug.....	.05	115-25	Choke connector rod.....	.15
11B-63	Idle vent screw plug.....	.10	116-13	Ball02
14-1505	Choker lever and shaft assembly.....	.40	117-24	Pump connector link.....	.10
14-1525	Choker lever and screw assembly.....	.20	117-30	Pump operating link.....	.15
17-30	Pump piston needle.....	.15	121-17	Body gasket10
20-31	Needle seat gasket.....	.05	121-29	Body flange gasket.....	.05
20-32	Metering screw gasket.....	.05	123-185	Idle orifice tube and plug assembly.....	.20
20-37	Step-up piston washer.....	.05	145-145	Main vent tube and plug assembly.....	.20
20-38	*Pump piston needle seat gasket.....	.05	149-315	Step-up valve cage assembly.....	.40
21-495	Float and lever assembly.....	.80	150-35	Pump rod pin.....	.02
24-195	Float lever pin and plug assembly.....	.10	150A-13	Pin spring01
25-505	Needle and needle seat assembly.....	.80	159-22	Main metering screw—1 size lean.....	.30
25-525	Pump piston needle seat and gasket assembly.....	.30	159-23	Main metering screw—2 sizes lean.....	.30
30A-37	Idle adjustment screw.....	.30	159-40	Main metering screw—Standard.....	.30
38A-26	Step-up passage bushing.....	.05	160-145	Step-up piston assembly (Superseded by 160-235)30
39-11	Valve attaching screw.....	.2 for .05	160-17	Pump piston (Outer).....	.40
43B-10	Pump piston rod washer.....	.05	160-21	Pump piston15
48-44	Pump jet15	160-225	Pump piston, needle and plug assembly.....	.30
49-89	Step-up push rod.....	.10	160-235	Step-up piston assembly.....	.30
49-96	Pump piston rod.....	.02	162-18	Power orifice (Step-up jet) (ass'y 149-315).....	.10
61-58	Throttle lever adjusting screw spring.....	.05	183-11	Insulator35

*Gaskets so marked must be soaked in 90 proof denatured alcohol for 15 minutes, installed on part and let dry before using.

List price of \$3.00 per 100 applies to parts listed at \$0.05 each.

List price of \$1.75 per 100 applies to parts listed at \$0.03 each.

List price of \$1.25 per 100 applies to parts listed at \$0.02 each.

List price of \$0.50 per 100 applies to parts listed at \$0.01 each.

CARBURETOR

Made in U.S.A. & Canada